

## RFM-5200 OBDII interface Vehicle Tracker

### Product Features

- Plug & Play, easy installation for car.
- Real-Time Tracking/Position feedback via SMS or GPRS.
- Real-time Vehicle Engine Status/Event Detection/Report via OBD II interface. (OBD II permitted protocols)
- Provide the data of GPS location, ignition status, geo-fencing, trip report & events.
- Operational Bluetooth connection for car OBD information output. (SPP profile)
- Power Management. (ACC ON/OFF Switch & Plug-out Detection)



### Applications

- Fleet Management
- Usage-Based Insurance
- Driving Assistance
- Outdoor position(GPS)



### Driving Safety

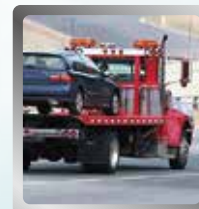
- Vehicle Status Management  
fuel/tire pressure/collision warning
- Driver Behaviour Management  
sudden stops/sudden speeding-up/quick turn



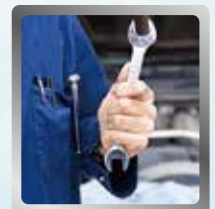
GPS



Call Center



Roadside Service



Car Care

